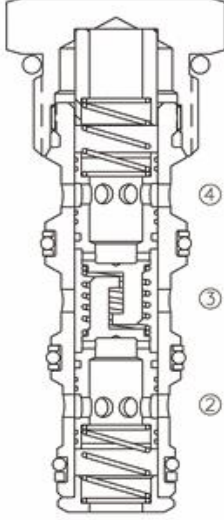


Basınç- Dengeli, Kartriç Akış Bölücü / Birleştirici Valf

LFD-10



Pressure-Compensated, Cartridge Flow Divider/Combiner Valve

OPERATION

In the dividing mode, the valve will divert input flow from port ③ to ports ② and ④, based on the ratio specified, regardless of operating pressure. When the flow direction is reversed the valve will combine flows from ② and ④ to ③ port. Synchronizing flow is provided in both the dividing and combining modes at "bottomed" conditions in cylinder applications and at "stalled" conditions in motor applications.

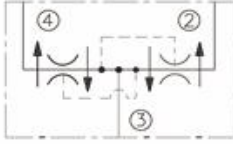
FEATURES

- Pressure-compensated.
- Quiet response.
- Industry common cavity.
- Compact size.

ÖZELLİKLER

- Basınç- dengeli
- Hareketsiz tepki
- Endüstriyel standartlarda kavite
- Kompakt Boyut

SYMBOL



SPECIFICATIONS

Operating Pressure : 345 Bar.

Flow Options :

Input Flow:15.1lpm;Ratio:50:50; Model:LFD-10-3.0

Input Flow:22.7lpm;Ratio:50:50; Model:LFD-10-6.0

Input Flow:34.1lpm;Ratio:50:50; Model:LFD-10-12.0

Input Flow:45.4lpm;Ratio:50:50; Model:LFD-10-16.0

Flow Tolerances :

+10% from 25-100% of MAX.rated flow

Temperature : -30° F to +250° F (-35°C to +120° C)

Recommended Filtration : ISO 16/12

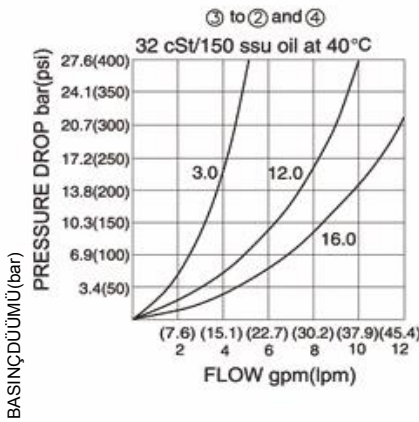
Fluids : Mineral-based fluids.

For other fluid compatibility consult factory.

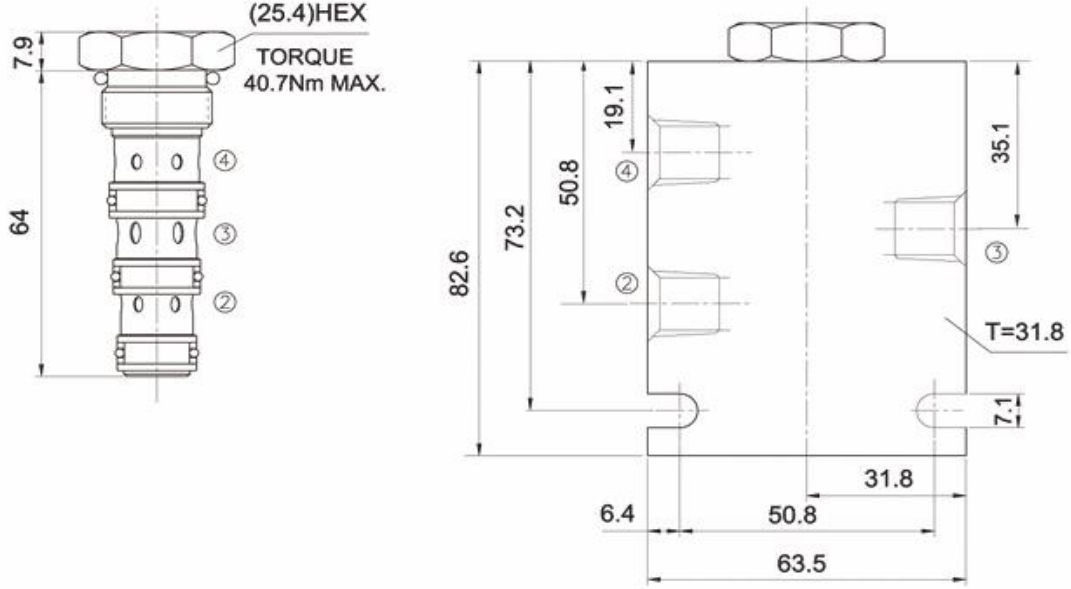
Cavity : 10-4, see page 265

Body Material : Anodized 6061T6 aluminum
alloy rated at 207 Bar.

PRESSURE DROP VS. FLOW

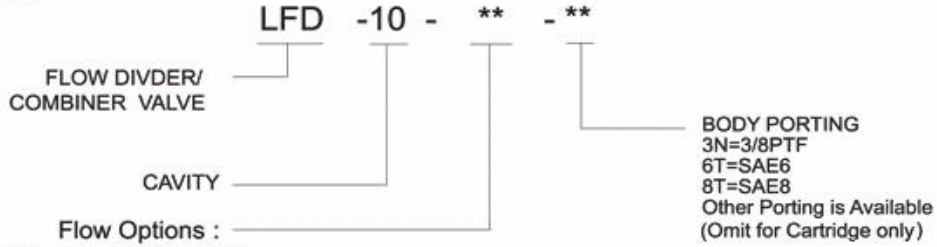


YERLEŞTİRME ÖLÇÜLERİ INSTALLATION DIMENSIONS



Unit=Millimeters

TO ORDER



- 3.0=Input Flow:11.4lpm;Ratio:50:50;
6.0=Input Flow:22.7lpm;Ratio:50:50;
12.0=Input Flow:45.4lpm;Ratio:50:50;
16.0=Input Flow:60.6lpm;Ratio:50:50;

Hidrosam Hidropar Hidrolik Pnömatik Elektrik San.Tic. Ltd
Alaaddinbey mah. 623 sok. Şam 1 plaza B blok No:2/d Nilüfer/BURSA TURKEY

Tel:+90224 441 8877 Fax:+90224 441 0333

info@hidrosam.com www.hidrosam.com